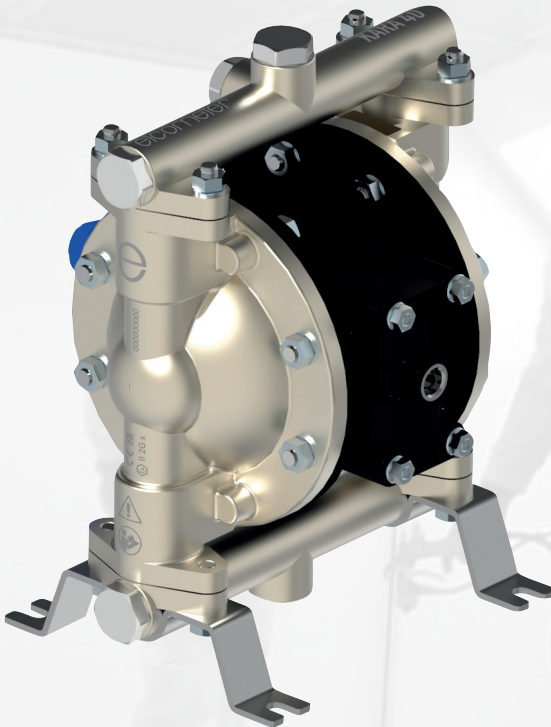


ELCOMETER

KARA

DOUBLE DIAPHRAGM
TRANSFER PUMPS



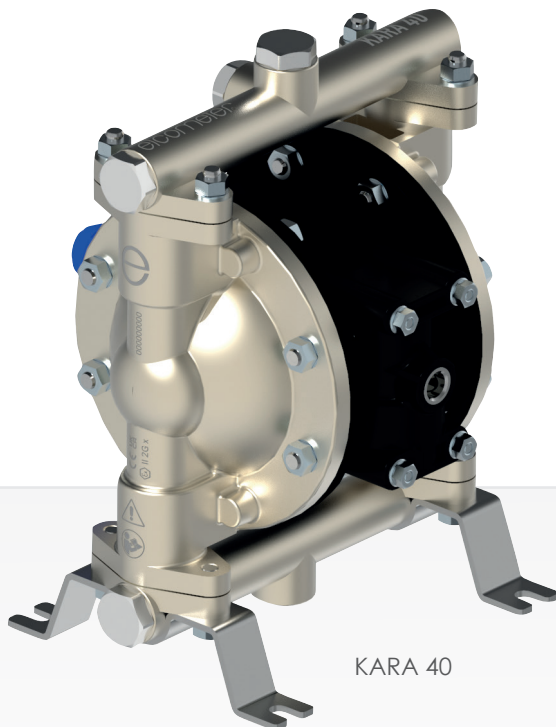
elcometer®

ELCOMETER K A R A

DOUBLE DIAPHRAGM
TRANSFER PUMPS

RATIO

1:1



KARA 40

AR

FF

IF

IP

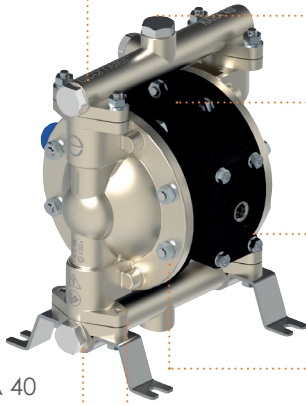
COMPLIANCE:

ATEX  2 II GX

Ideal for use with water and solvent based materials, the **Elcometer KARA** double diaphragm transfer pumps are engineered to quickly and consistently supply fluid smoothly.

Key Features

KARA 40



40lpm (10.6gpm) fluid delivery capacity

Versatile front and top fluid outlets for ease of use

Low pulsing air distribution manifold uses durable metal to metal technology to prevent pump stalling

KARA 40 supplied with Polypropylene seats and PTFE balls for water based and solvent materials

Durable lightweight anodized aluminium pump housing

Fast and easy to service on site using standard tools to reduce downtime

KARA 40A Abrasive Transfer Pump is supplied with stainless steel balls and seats to suit ceramic based materials

KARA 30



Versatile front and top fluid outlets for ease of use

Stainless steel balls and seats for water based and semi viscous materials

Modular air valve provides smooth and rapid changeover for increased efficiency and minimised down time.

Durable lightweight anodized aluminium pump housing

Lightweight, anti-corrosive Polyethylene (LDPE) centre housing

Available with 200 litre (44 gallons) drum lid and rotary agitator



Elcometer KARA Key Features

With high 30-40 litres (6.6-8.8 gallons) per minute fluid delivery capacity, a smooth air change over valve and aluminium, stainless steel & PTFE polyamide construction Elcometer KARA transfer pumps are built to last.

IDEAL FOR USE WITH:

Material	
Solvent Based	▶
Water Based	▶
Product	
KARA 30 & KARA 40	
Single component (1k) epoxies	▶
Single component (1k) polyurethanes	▶
Plural (2k) & multi-component (3k) low viscose polyurethane epoxies ¹	▶
Water based enamel coatings	▶
Solvent-based primer and base coats	▶
Quick air dry enamel coatings	▶
Metallic-based epoxy coatings	▶
Wood stains	▶
High solid pre-catalysed lacquers	▶
Acid-catalyst wood lacquers	▶
Waterborne lacquers	▶
UV curable epoxies	▶
Water based UV coatings	▶
1k fire-retardant coatings	▶
Natural wood oils	▶
Antimicrobial lacquers	▶
Sealers and undercoats	▶
KARA 1-40A	
Inorganic zinc coatings	▶
Stove enamels	▶
Graphene-based materials	▶
Water based ceramic glaze coatings	▶
Abrasive coatings for cosmetic & glass	▶
Vitreous enamel	▶
Vitreous sanitaryware glaze	▶
Industrial porcelain coating	▶
Ceramic tableware glaze	▶

Powerful performance

With up to 40 litres per minute maximum free flow, the Elcometer Kara's powerful fluid circulation keeps paint homogenous whilst ensuring pulse-free material flows to the application points, even with long fluid hoses. In fact, the Elcometer Kara's high performance can support multiple spray guns at once.

Robust

Rugged stainless steel and aluminium construction to handle a wide variety of fluid types.

Excellent cost of ownership

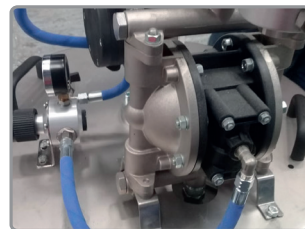
Designed with low air consumption, the Elcometer Kara helps to lower expensive compressor running costs.

Versatile

Whether you are working with water based, solvent based or abrasive materials there is an Elcometer Kara Transfer Pump available with optional drum lid and rotary agitator to suit your requirements.



Low air consumption to reduce compressor costs.



Available with drum lid and rotary agitator.

TECHNICAL SPECIFICATION			
	KARA 30	KARA 40	KARA 40A
Ratio	1 : 1	1 : 1	1 : 1
Maximum fluid particle size ¹	0.25mm (10mils)	0.25mm (10mils)	0.25mm (10mils)
Fluid temperature range	4.4 - 60°C (40 - 140°F)	4.4 - 60°C (40 - 140°F)	4.4 - 60°C (40 - 140°F)
Fluid inlet size	½" BSP Male	½" BSP Male	½" BSP Male
Fluid outlet size	½" BSP Male	½" BSP Male	½" BSP Male
Compatible Products that can be pumped	Solvent and waterbased products	Solvent and waterbased products	Abrasive, solvent and waterbased products
COMPOSITION OF PARTS IN CONTACT WITH PRODUCT (WET)			
Seats	Stainless Steel	Polypropylene	Stainless Steel
Balls	Stainless Steel	PTFE	Stainless Steel
Diaphragm	Polyethylene	PTFE	PTFE
Pump Body / Cylinder Housing	Polyethylene / Aluminium	PTFE / Aluminium	PTFE / Aluminium
Centre Section	Aluminium	Polyamide	Polyamide
EXTERNAL PUMP PARTS (DRY)			
Pump Body / Cylinder Housing	Polyamide / Aluminium	Polyamide / Aluminium	Polyamide / Aluminium
AIR			
Air Pressure Operating Range	1-6bar (14-87psi)	1-7bar (14-101psi)	1-7bar (14-101psi)
Air Consumption at 3 bar (43.5 psi) & 7.5 CPM	1.8lpm (0.06cfm)	-	-
Air Consumption at 3 bar (43.5 psi) & 16 CPM	-	7.92lpm (0.28cfm)	7.92lpm (0.28cfm)
Maximum Air Inlet Pressure	6bar (87psi)	7bar (101psi)	7bar (101psi)
Air Inlet	¼" BSP Female	¼" BSP Female	¼" BSP Female
Air Exhaust / Silencer Port	½" BSP Female	½" BSP Female	½" BSP Female
Compressor Requirements (Minimum)	No Minimum	No Minimum	No Minimum
Ambient Air Temperature Operating Range	4.4 - 60°C (40 - 140°F)	4.4 - 60°C (40 - 140°F)	4.4 - 60°C (40 - 140°F)
FLUID / PRODUCT			
Maximum Fluid Outlet Working Pressure	6bar (87psi)	7bar (101psi)	7bar (101psi)
Product Output per Cycle ²	80 cc (2.56fl oz/min)	165 cc (4.61fl oz/min)	165 cc (4.61fl oz/min)
Maximum Free Flow ³	30lpm (7.9gpm)	40lpm (10.6gpm)	40lpm (10.6gpm)
Free Flow Delivery @ 60 CPM ⁴	4.8lpm (1.26gpm)	10lpm (2.64gpm)	10lpm (2.64gpm)
DIMENSIONS			
Weight (Pump only)	3.3 kg (7.3lb)	4.6kg (10.1lb)	4.8kg (10.6lb)
Dimensions (Wall Mount)	185 x 141 x 215mm (7.3 x 5.6 x 8.5")	210 x 204 x 270mm (8.3 x 8 x 10.6")	210 x 204 x 270mm (8.3 x 8 x 10.6")

1. With suction hose or deposit and pump output filter.

2. Product Output per Cycle = Fluid Displacement per Cycle

3. Maximum Free Flow is the volume of fluid the pump is able to transfer at maximum speed and at an undefined number of cycles.

4. Maximum values with water as test media.

Elcometer **KARA** Range Explained

PART NUMBERS		◀ Supplied as standard ◁ Optional extra					
Part Number	Description	Pump Configuration			Mixer Type		
		None	Elcometer 200 Drum Cover	Combined Air & Product Hose ¹	None	Manual	Rotary Agitator
PTD130AS	Elcometer Kara 30 Double Diaphragm Transfer Pump	◀		◁	◀		
PTD140AS	Elcometer Kara 40 Double Diaphragm Transfer Pump	◀		◁	◀		
PSD140AS-C	Elcometer 200 Drum Cover with Elcometer Kara 40 Double Diaphragm Transfer Pump		◀	◁	◀		
PSD140AS-C-RA	Elcometer 200 Drum Cover with Elcometer Kara 40 Double Diaphragm Transfer Pump & Rotary Agitator		◀	◁			◀
PTD140AAS	Elcometer Kara 40A Double Diaphragm Transfer Pump for Abrasive Materials	◀		◁	◀		



Elcometer 200 Drum Cover with Kara 40 Transfer Pump

The Elcometer 200 Drum Cover fitted with the Kara 40 transfer pump complete with air inlet regulator.



Elcometer 200 Drum Cover with Kara 40 Transfer Pump & Rotary Agitator

The Elcometer 200 Drum Cover fitted with the Kara 40 transfer pump complete with rotary agitator and air inlet regulator.

Part Number	Description
PSD140AS-C	Elcometer 200 Drum Cover with KARA 40

Part Number	Description
PSD140AS-C-RA	Elcometer 200 Drum Cover with KARA 40 & Agitator

Elcometer KARA Spares

For a complete breakdown of Elcometer KARA pump spares, including diagrams, please see Section 7 Spare Parts.

Replacement Parts - Diaphragm Pump

KARA 30	KARA 40	KARA 40A	Description
PT49000477	-	-	Upper Valve Kit
PT49000476	-	-	Lower Valve Kit
-	PT30090020	PT30090092	Valve Kit
PT49000478	PT30090017	PT30090096	Diaphragm Replacement Kit
PT49000481	PT30090019	PT30090019	Distribution Pump Kit (includes Insert & Plate)

Combined Air & Product Hose for Air Spray (Low Pressure) Systems

Polyester covered, lightweight and durable combined air and product hose, comprises of 8 x 15mm (0.31 x 0.59") rubber EPDM anti-static air hose with female to female ¼" connections and 6 x 8mm (0.24 x 0.31") nylon product hose with female ⅜" adaptor for pressure spray guns.



Air Hose Working Pressure (Max): 20bar (290psi)
Product Hose Working Pressure (Max): 18bar (261psi)

Part Number					
1.8m (5.9ft)	5m (16.4ft)	7.5m (24.6ft)	10m (32.8ft)	15m (49.2ft)	20m (65.6ft)
PT56414130	PT56414039	PT56414044	PT56414040	PT56414041	PT56414042

Anti-Static Air Hose for Air Spray (Low Pressure) Systems

Anti-Static, EDPM with textile reinforcement, ID: 8mm x OD: 15mm with ¼" Female Connection, ideal for use with Elcometer Kara Pumps.



Part Number				
6m (19.7ft)	11m (36ft)	16m (52.5ft)	21m (68.9ft)	26m (85.3ft)
PT56414024	PT56414025	PT56414027	PT56414028	PT56414026

Thermo Rubber Product Hose for Air Spray (Low Pressure) Systems

Thermo Rubber, ID: 8mm x OD: 16mm with ⅜" Female Connection, ideal for use with Elcometer Kara Pumps.



Part Number				
6m (19.7ft)	11m (36ft)	16m (52.5ft)	21m (68.9ft)	26m (85.3ft)
PT56414116	PT56414117	PT56414115	PT56414118	PT56414119

ENGLAND, UK

Elcometer Limited
+44 (0)161 371 6000
sales@elcometer.com
www.elcometer.com

FRANCE

Elcometer Sarl
+33 (0)2 38 86 33 44
fr_info@elcometer.com
www.elcometer.fr

GERMANY

Elcometer Instruments GmbH
AALEN: +49 (0) 7361 52806 0
LEER: +49 (0) 7361 528 06 60
de_info@elcometer.com
www.elcometer.de

THE NETHERLANDS

Elcometer B.V.
+31 (0)30 259 1818
nl_info@elcometer.com
www.elcometer.nl

SPAIN

Sagola SA
+34 945 214 150
sagola@sagola.com
www.sagola.com

JAPAN

Elcometer KK
+81 (0)3 6869 0770
jp_info@elcometer.com
www.elcometer.co.jp

REPUBLIC OF SINGAPORE

Elcometer (Asia) Pte Ltd
+65 6462 2822
asia@elcometer.com
www.elcometer.com

UNITED ARAB EMIRATES

Elcometer LLC
+971 4 295 0191
+971 4 280 3526
uae_sales@elcometer.com
www.elcometer.ae

UNITED STATES OF AMERICA

Elcometer Inc
WARREN, MI: +1 248 650 0500
HOUSTON, TX: +1 713 450 0631
Toll Free: 800 521 0635
inc@elcometer.com
www.elcometer.com

elcometer®
www.elcometer.com

Elcometer is a registered trademarks of Elcometer Limited. Sagola DPC is a trademark of Elcometer Limited. All other trademarks are acknowledged.

Due to our policy of continuous improvement, Elcometer Limited reserves the right to change specifications without notice.

All products are covered by a comprehensive warranty, for more information visit www.elcometer.com/warranty.

© Elcometer Limited, 2023. All rights reserved. No part of this document may be reproduced, transmitted, stored (in a retrieval system or otherwise), or translated into any language, in any form, or by any means, without the prior written permission of Elcometer Limited.